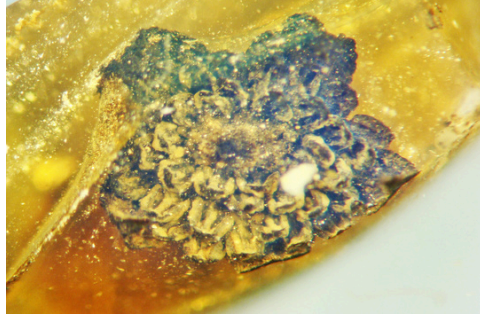


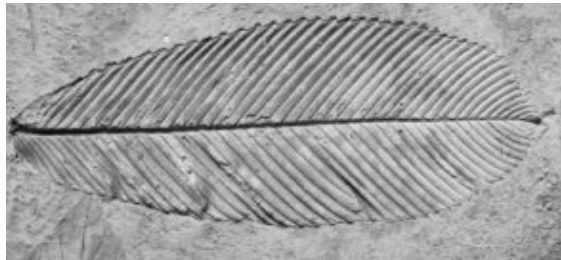
# MATCH THAT FOSSIL

These fossils form when water carries minerals into an organism's cells. When the minerals harden into crystals, they lock in the shape of the space they occupy



Dinosaur bones and petrified wood are examples of this process.

Organisms such as insects can become trapped in sap from trees. When it hardens, it can preserve the entire creature. Unlike other processes, amber can keep tissues like skin and organs intact.



Imprints form when water washes away an organism, but leaves behind its shape. As minerals fill the void, they preserve that shape.



FORT WORTH MUSEUM  
SCIENCE AND HISTORY